

THE VIEWS



IN THIS ISSUE...

Page 2	The Board
Page 3	Clubhouse
Page 4	Upcoming Events
Page 5	Community News
Page 6	Contacts

Office Hours:

Monday 10 AM-3 PM

Wednesday 10 AM-3 PM

Thursday 6 PM- 8 PM

Saturday 9 AM- 12 PM

UPCOMING EVENTS:

Late Night at the Pool

August 5th

7:00-10:00 pm

More info on page 4...



Summer Celebration

August 13th

1pm-5pm

More info on page 4...



Trunk or Treat Event

SAVE THE DATE!

October 28th

More info coming soon!



2024 Assessment Payment Plan

Get a head start and sign up for
a payment plan!

More info on page 2...



(630) 355-9559

Steeplerun7@sbcglobal.net

www.steeplerun.net

THE BOARD



*RSVP TO BE ADDED
TO THE AGENDA*

BOARD ACTIONS TAKEN

Accepted proposal for Commercial Asphalt

Accepted proposal for AP trees

Approved Swim Lesson fees

Approved purchase of AED

Next Meeting: Thursday, August 10th.

2024 SRCC Assessment

The 2024 Assessment is due by January 31, 2024. The assessment is \$715.00 for Standard Units and \$755.00 for Rental Units.

SRCC has approved a PayLease only six-month autopay option. Residents need to have their first payment made by August 31, 2023. Details are on the website. A mailing using the USPS with the 2024 budget and assessment information will take place in Oct./Nov. 2023 which is required by the SRCC by-laws.

Executive Board Members

President

Michael Klecka

Vice President

Sue Janecek

Treasurer

Lynn Gutoski

Secretary

Tim Loatman

At- Large Members

Brian Haberstich

Jakob Breving-Johnson

Brian Cleary

Mike Ladas

Eric Lukacsik

Troy Michalek

Bill Klein

THE CLUBHOUSE

PAID ASSESSMENT LETTERS

Paid Assessment Letters, or "PALS" are issued by the Steeple Run Clubhouse and are required to sell your home. Please have your attorney send a written request for a paid assessment letter in advance of your closing. The cost of the paid assessment letter is \$40.00. If you require express processing, the increased rate is \$60.00. The request *must* be in writing and come from your attorney. Please include the closing date, property address, names of the sellers, names & contact info of the buyers, and contact information for both attorneys.

Please email requests to:
SteepleRun7@sbcglobal.net



*NEW OR
REPLACEMENT
FENCES
REQUIRE
BOARD
APPROVAL*



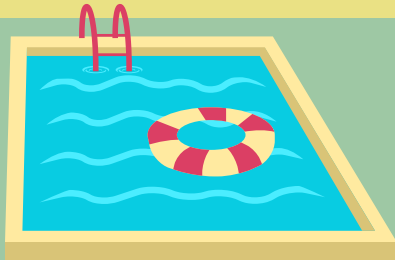
STEEPLE RUN FACEBOOK

The Steeple Run Community Council does not moderate or run the local Steeple Run Facebook page. There is no affiliation or knowledge of the content being posted. The page is run by volunteer residents. Please contact the Facebook page's moderators for questions or concerns.



UPCOMING EVENTS

LATE NIGHT AT THE POOL

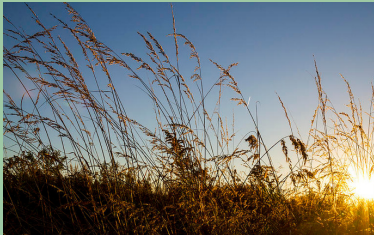


Trunk or Treat Event
SAVE THE DATE!
October 28th



COMMUNITY NEWS

DRY PONDS' RESTORATION



Steeple Run is restoring the dry ponds to a more natural state. This is a four-year project. Applications of an herbicide and seeding of more desirable plants took place. The next few years will include maintaining the new plantings and continued removal of invasive or unwanted weeds.

Lisle Township Recycling Program Starting on August 1, Monday-Friday 9 AM-4PM

1. For more information, see : Lisletownship.com/recycling.
2. Bring an item to the receptionist for processing at 4711 Indiana Ave., Lisle, or call 630-968-2087. If it is a TV or Monitor, pay ahead of time or with a credit card. Up to 21 inches- \$25 over 35\$. Payment can be made in advance at <http://recycling.eworksesi.org/>. All other electronics are accepted at no charge. For larger pieces, check in with the receptionist but leave the piece in your vehicle. The receptionist will direct
4. If it is a textile, please bag it prior to your arrival.



CONTACTS

STEEPLE RUN CLUBHOUSE

Phone:(630) 355-9559 Fax:(630) 355-9781

SteepleRun7@sbcglobal.net

Office Manager: Beth Dunlop

Bookkeeper: Robin McCracken

Steeple Run Pool Phone:(630) 355-6699

Open Memorial Day to Labor Day (Weather permitting).

STEEPLE RUN CONDOMINIUM ASSOCIATION

204 E St. Charles Road Lombard, IL 60148

Community Association Manager: Kimberly Lovig

Phone:(630)588-9500 Fax: (630)599-7071 Klovig@redbrickpm.com

www.Redbrickpm.com

The Condo Association meets every other (even) Tuesday of the Month.