

»»» NEWSLETTER

# THE STEEPLE RUN VIEWS



OFFICIAL PUBLICATION OF  
THE STEEPLE RUN  
NEIGHBORHOOD



## IN THIS ISSUE...

|        |                  |
|--------|------------------|
| Page 2 | The Board        |
| Page 3 | Clubhouse        |
| Page 4 | Steeple Run News |
| Page 5 | Community News   |
| Page 6 | Contacts         |



## REMINDER

2024 Assessments due by

**JANUARY 31ST**

\$715 Standard Owner

\$755 Rental Owner



PAGE 4



MORE  
INFO...  
PAGE 2

## Office Hours:



- Monday 10 AM-3 PM
- Tuesday 6 PM- 8 PM
- Wednesday 10 AM-3 PM
- Saturday 9 AM- 12 PM

# THE BOARD

## BOARD ACTIONS TAKEN



*RSVP TO BE ADDED  
TO THE AGENDA*

- Happy Holidays from the Steeple Run Board!
- December 2023 meeting is canceled

**Next Meeting: Thursday, January 11th.**

Join the  
**Board**  
*of Directors*  
**Apply today!**

THE STEEPLE RUN BOARD CURRENTLY HAS  
ONE VACANT SEAT. SUBMIT YOUR  
LETTER OF INTENT TODAY TO LEARN  
MORE ABOUT HOW YOU CAN CONTRIBUTE  
AND SUPPORT YOUR COMMUNITY.

KINDLY REACH OUT TO THE STEEPLE RUN  
OFFICE FOR FURTHER INFORMATION.

### Executive Board Members

***President***

Michael Klecka

***Vice President***

Sue Janecek

***Treasurer***

Lynn Gutoski

***Secretary***

OPEN

### At- Large Members

Brian Cleary

Brian Haberstich

Bill Klein

Mike Ladas

Eric Lukacsik

Troy Michalek

Tamara Moore

# THE CLUBHOUSE

---

## PAID ASSESSMENT LETTERS



Paid Assessment Letters are issued by the Steeple Run Clubhouse and are required to sell your home. Please have your attorney send a written request for a paid assessment letter in advance of your closing. The cost of the paid assessment letter is \$40.00. If you require express processing, the increased rate is \$60.00. The request *must* be in writing and come from your attorney. Please include the closing date, property address, names of the sellers, names & contact info of the buyers, and contact information for both attorneys.



Please email requests to:

[SteepleRun7@sbcglobal.net](mailto:SteepleRun7@sbcglobal.net)

## CLUBHOUSE RENTALS



Please contact the Steeple Run Clubhouse for rental availability. As a reminder, rentals are only available to Steeple Run residents. The cost to rent is \$200 per day. There is also a refundable \$300 security deposit due one week prior to your event. Rentals are on a first come first serve basis. The Clubhouse cannot hold a date without a contract and payment. To inquire about available dates, please contact the Steeple Run Clubhouse office.

*NEW OR  
REPLACEMENT  
FENCES  
REQUIRE  
BOARD  
APPROVAL*



# STEEPLE RUN NEWS

Thank you to Santa, Mrs. Claus & the Grinch for coming to Steeple Run to spread holiday cheer!



## NOW HIRING

**Now Accepting Applications for the 2024 Pool Season!!**

- Pool Manager
- Certified Lifeguards
- Swim Lesson Instructors

**Contact the Steeple Run office for an application!**

(630) 355-9559

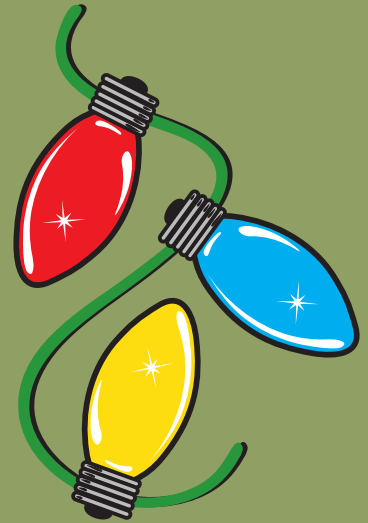
[Steeplerun7@sbcglobal.net](mailto:Steeplerun7@sbcglobal.net)



# COMMUNITY NEWS

## HOLIDAY LIGHTS

LISLE RESIDENTS WHO WOULD LIKE TO RECYCLE AN UNLIMITED AMOUNT OF OLD, BROKEN OR UNWANTED STRANDS OF HOLIDAY LIGHTS CAN BRING THEM TO THE VILLAGE HALL LOBBY (925 BURLINGTON AVE), MONDAY THROUGH FRIDAY, NOVEMBER THROUGH JANUARY 31, 2024 FROM 8:00 AM TO 4:30 PM.



## SNOW REMOVAL

NO PARKING RULES IN EFFECT WHEN SNOW IS ONE INCH AND STAYS IN EFFECT FOR 24 HOURS AFTER SNOWFALL SO THE STREETS CAN BE CLEARED.

ANY VEHICLE VIOLATING THE ORDINANCE MAY BE TICKETED AND FINED, OR EVEN TOWED. ARTERIAL AND SECONDARY STREETS ARE PLOWED FIRST. CUL-DE-SACS AND DEAD ENDS ARE DONE LAST.



## CHRISTMAS TREE COLLECTION...

LAKESHORE RECYCLING SYSTEMS WILL PICK UP CHRISTMAS TREES DURING THE FIRST THREE FULL WEEKS IN JANUARY AT NO CHARGE. TREES LONGER THAN 7' MUST BE CUT IN HALF.



# CONTACTS

---

## STEEPLE RUN CLUBHOUSE

Phone:(630) 355-9559 Fax:(630) 355-9781

SteepleRun7@sbcglobal.net

Office Manager: Amy Garcia

Bookkeeper: Robin McCracken

Steeple Run Pool Phone: (630) 355-6699

Open Memorial Day to Labor Day (Weather permitting).

## STEEPLE RUN CONDOMINIUM ASSOCIATION

Community Association Manager: Kimberly Lovig

204 E St. Charles Road Lombard, IL 60148

Phone:(630) 588-9500 Fax: (630) 599-7071 [www.Redbrickpm.com](http://www.Redbrickpm.com)

The Condo Association meets every other (even) Tuesday of the Month.